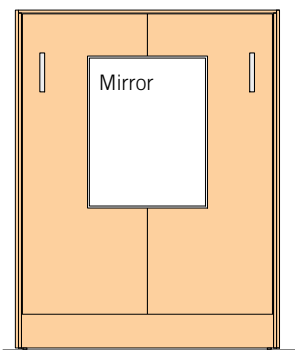
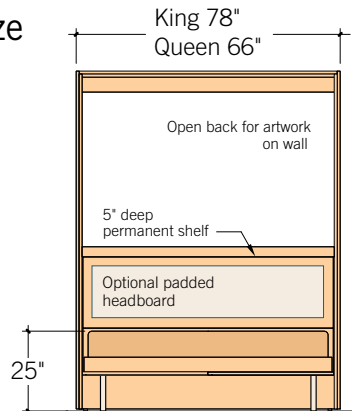


The Inova WallBed: *Broadway and Symphony Series*

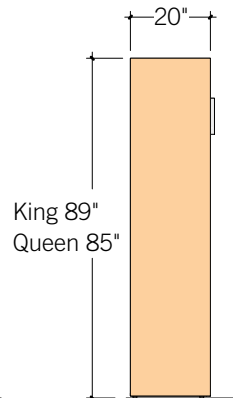
Queen and King-size



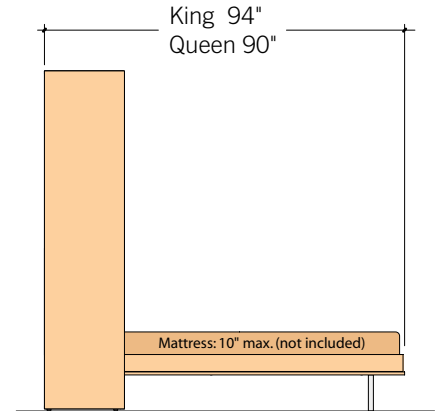
Front view;
Bed up



Front view;
Bed down

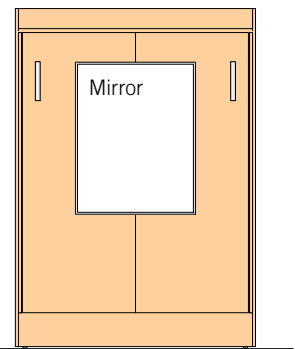


Side view;
Bed up

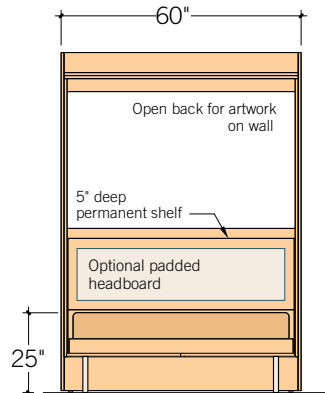


Side view;
Bed down

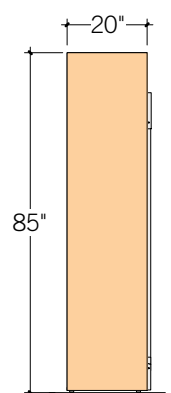
Full-size



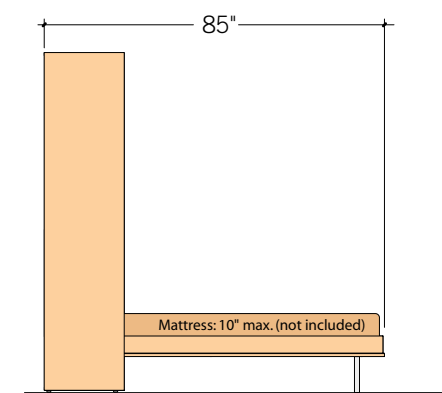
Front view;
Bed up



Front view;
Bed down

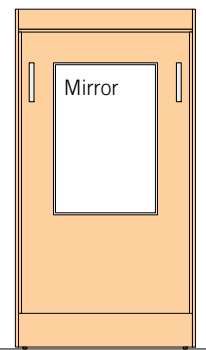


Side view;
Bed up

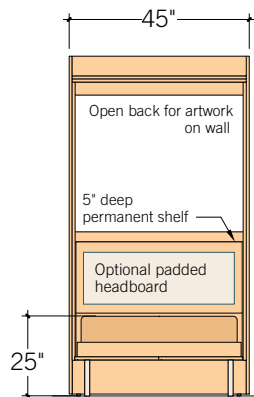


Side view;
Bed down

Twin-size



Front view;
Bed up



Front view;
Bed down

- The *Broadway Series WallBed* is built in melamine over particle board. The *Symphony Series WallBed* is built in Maple veneer over particle board. See Finish Sheet or panel samples for all finishes.
- WallBed installation requires only a simple attachment to the wall at the top of the cabinet; no drilling into the floor.
- All WallBeds coordinate in height, depth, and finishes with the Inova TableBeds and cabinet systems.
- Mattress is supported on a steam-bent hardwood European slat system.